

# CORRECTIONAL FACILITIES





**FREEBORN COUNTY GOVERNMENT CENTER** Albert Lea, MN

## CORRECTIONAL FACILITIES

**30+**

JAIL/DETENTION  
CENTERS  
COMPLETED

**168**

TOTAL DESIGN  
AWARDS

### DESIGN SERVICES

- Facility Assessments
- Needs Assessments
- Feasibility Studies
- Operational Planning
- Staffing Analysis
- Demographic Projections
- Programming
- Conceptual Studies
- Master Planning
- Site & Facility Planning
- Detention Planning & Design
- Costs & Funding
- Referendum Support

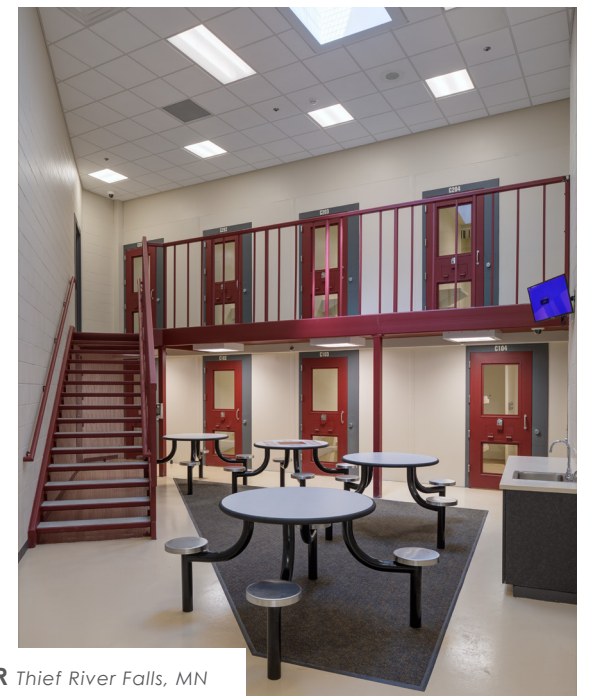
### Sustainable Environments

The environments we create for managing the occupants in detention and correctional facilities play an important role in the penal and rehabilitation processes. Our goal is to develop facilities that are durable, safe to operate, and as energy-efficient as possible. A correctional facility design that incorporates sustainable choices can stay on budget, support a progressive approach to inmate rehabilitation, and conserve energy and water. Strategies include

- Building placement and orientation for maximum daylight
- Appropriately insulated building envelope
- Water use reduction
- Energy economizing mechanical and electrical systems



**PENNINGTON COUNTY JUSTICE CENTER** Thief River Falls, MN



### SPACE ANALYSIS NEEDS

The BKV Group team has developed a comprehensive and collaborative Space Needs Assessment process to pinpoint jail and law enforcement space needs. The assessment incorporates information gained through

- One-on-one interviews
- Review/audit of existing facilities and jail facility tours
- Development of space standard diagrams
- Inmate population and jail staffing projections

### CORRECTIONAL STAFFING PROJECTIONS

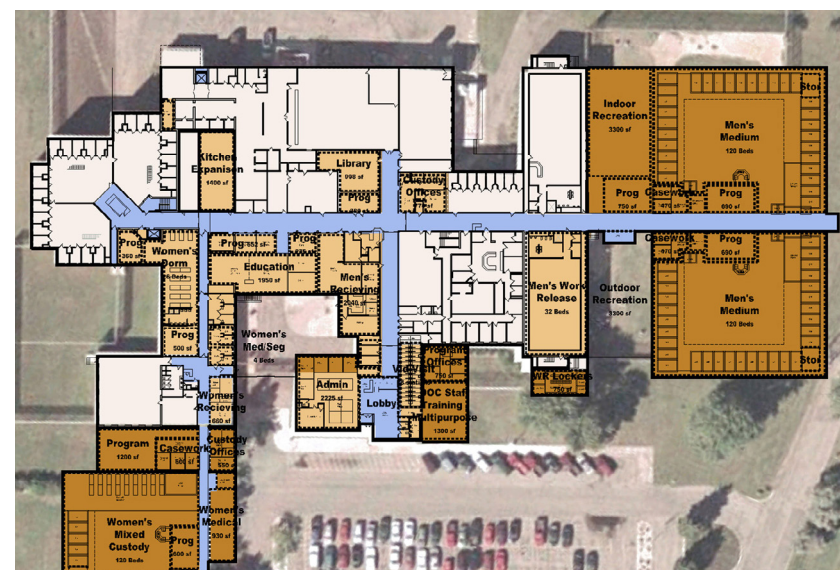
Physical plant and staffing models have a direct relationship. A facility's staffing is dependent upon the design of the facility as well as operational model, including direct, indirect, and podular remote supervision.

A facility's optimum inmate capacity is determined by the allowable staff-to-inmate ratios, as defined by DOC requirements. Our team understands that an effective needs analysis must model both current and future staffing plans, including inmate projections and classification. This approach assures optimum facility planning and maximized staffing efficiency, which is often the largest long-term expense associated with correctional facilities.

### JAIL FACILITY COMPARISONS

It is informative to compare a proposed facility's needs to a wide range of similar facilities. We maintain a database of facilities which are updated and tailored as required to create relevant comparisons for our clients. We review each item with our clients to assure that the facility is designed to meet their specific needs. Variables compared include

- Inmate population and classifications, and facility size and age
- Staff-to-inmate ratios
- Anticipated future facility additions
- Relation of space size and type such as vehicle sallyport, kitchen, indoor/outdoors recreation, central control, etc.
- Security systems



**RAMSEY COUNTY CORRECTIONAL FACILITY** Maplewood, MN



**PINE COUNTY JUSTICE CENTER**  
Pine City, MN



5

PRACTICE  
SITES

41

YEARS OF  
OPERATION

200+

EMPLOYEES

BKV GROUP IS A HOLISTIC DESIGN  
FIRM PROVIDING ARCHITECTURE,  
ENGINEERING, INTERIOR DESIGN,  
LANDSCAPE ARCHITECTURE AND  
CONSTRUCTION ADMINISTRATION.



# ENRICHING LIVES AND STRENGTHENING COMMUNITIES

---

## CHICAGO

209 South LaSalle Street  
The Rookery, Suite 920  
Chicago, IL 60604

P 312.279.0470

## DALLAS

1412 Main Street  
Adolphus Tower, Suite 700  
Dallas, TX 75202

P 469.405.1196

## HANOI, VIETNAM

No 1 Dao Duy Anh Street  
Ocean Park Building,  
Suite 15, Room 1508  
Phuong Mai Ward, Dong Da District  
Hanoi, Vietnam

P 469.405.1240

## MINNEAPOLIS

222 North Second Street  
Long & Kees Building, Suite 101  
Minneapolis, MN 55401

P 612.339.3752

## WASHINGTON, DC

1054 31st Street NW  
Canal Square, Suite 410  
Washington, DC 20007

P 202.595.3173